

SPECIFICATION

K Type	CLASS	Wire Diameter	TEMPERATURE		THERMO-WELL	
			Normal Temp	Max. Temp	Material	Non- Material
A: ANSI-SP ±1.1°C or 0.4°C	B: ANSI-SDT ±2.2°C or 0.75°C	3.2	1000°C	1200°C	21.7x16.1	17x13
		2.3	900°C	1100°C	21.7x16.1	17x13
		1.6	850°C	1050°C	15x11	15x11
		1.0	750°C	950°C	12x9	15x11
E Type		0.65	650°C	850°C	10x7	10x6
		1.6	550°C	650°C	15x11	X
		1.0	500°C	550°C	12x9	X
		0.65	450°C	500°C	10x7	X
J Type		0.32	300°C	400°C	10x7	X
		2.3	550°C	750°C	21.7x16.1	17x13
		1.6	500°C	650°C	15x11	15x11
		1.0	450°C	550°C	12x9	15x11
T Type		0.65	400°C	500°C	10x7	10x6
		1.6	300°C	350°C	15x11	X
		1.0	250°C	300°C	12x9	X
		0.65	200°C	250°C	10x7	X
B Type		0.32	200°C	250°C	10x7	X
		0.5	1500°C	1700°C	X	15x11
R Type		0.5	1400°C	X	X	15x11
S Type		0.5	1400°C	X	X	15x11
Pt100Ω	DIN 4370-79	8.0	L: -200~+100°C M: 0~+350°C H: 0~+650°C			
	A: ±(0.15+0.002 t	6.4				
		4.8				
		3.2				
	B: ±(0.3+0.005 t	1.6				
		1.0				
		0.5				

Electrical

Isolation Resistance:

1000MΩ/500Vdc

Mechanical

Material:

Tube, Connection: St. Steel 316
Head: Aluminum case

Tube Diameter:

3.2, 4.8, 6.4, 8.0, 9.0, 12.75 mm

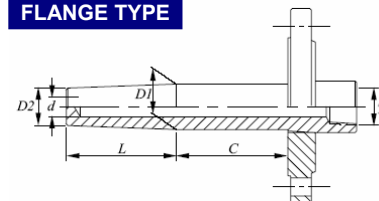
Connection:

1/4", 3/8", 1/2" NPT or PT male; 5.0Kg/cm²
Adjustment connection or Flange available

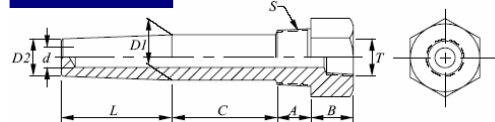
Thermo-Well:

1/4", 3/8", 1/2" NPT or PT male
Flange available

FLANGE TYPE



SCREW TYPE



Economic Type

Lead Wire Type: PVC, Teflon..., Please specify

Wire Length: Specify

ORDER INFORMATION

TH - Mode - Terminal Box - Sensor Type - Sensor Wire - Tube Length L, ℓ - Tube Diameter - Connection

* Please specify for ECONOMIC type and length extension wires

CODE	MODE	CODE	TERMINAL	CODE	SENSOR TYPE	CODE	SENSOR WIRE	CODE	LENGTH	CODE	DIAMETER	CODE	CONNECT
FF	Standard Flange	B	Big Box	K	Type K	800	8.0mm	L	ℓ	3	3.2 mm	G2	1/4" PT
FA	Adjustment Flange	M	Small Box	J	Type J	640	6.40mm	03	03	4	4.8 mm	G3	3/8" PT
SF	Standard Screw	N	None Box	E	Type E	480	4.8mm	04	04	6	6.4 mm	G4	1/2" PT
SA	Adjustment Screw	S	Single Element	T	Type T	320	3.2mm	05	05	8	8.0 mm	N2	1/4" NPT
EN	Economic	D	Dual Elements	R	Type R	230	2.3mm	06	06	9	9.0 mm	N3	3/8" NPT
ES	Economic Spring			S	Type S	160	1.6mm	08	08	C	12.75 mm	N4	1/2" NPT
				B	Type B	100	1.0mm	10	10	O	Specify	N	None
				PL	Pt100 -200~+100°C	065	0.65mm	12	12			O	Specify
				PM	Pt100 0~+350°C	050	0.50mm	15	15				
				PH	Pt100 0~+650°C	032	0.32mm	20	20				
								25	25				
								30	30				
								40	40				
								LO	LO				