

# SD-T TEMP. SIGNAL CONVERTER & ISOLATOR

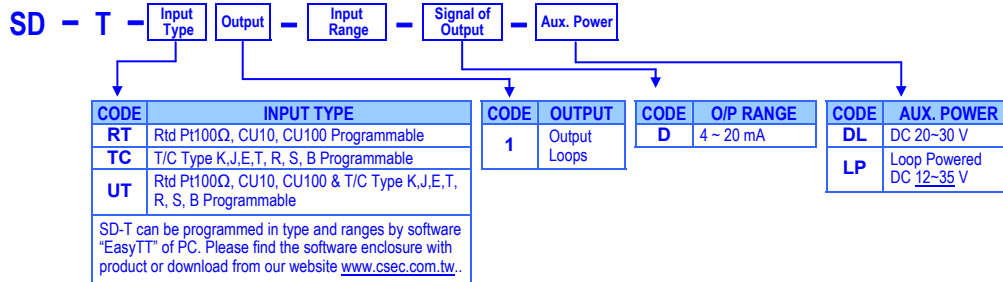
## FEATURE

- Input Type and range programmable for RTD Pt100Ω, Pt1000Ω, CU10, CU100; Thermo-couple type K, J, E, T, R, S, B
- Output 4~20mA with loop powered or auxiliary powered available
- DIN rail mounting with Ultra slim in 7.6 mm profile
- CE Approved & RoHS



**Ultra Slim (7.6mm) type**

## ORDERING INFORMATION



## TECHNICAL DATA

Input (Programmable by "TTPro" software of PC)

RTD Input Range	Input Impedance	T/C Input Range	Input Impedance
Pt100Ω(-200~+850°C)	≥ 10M ohm	Type K(-200~+1372°C)	≥ 1M ohm
Pt1000Ω(-200~+250°C)	≥ 10M ohm	Type J(-200~+1200°C)	≥ 1M ohm
CU10(-50~+150°C)	≥ 10M ohm	Type E(-200~+900°C)	≥ 1M ohm
CU100(-50~+150°C)		Type T(-200~+400°C)	≥ 1M ohm
		Type R(0~+1768°C)	≥ 1M ohm
		Type S(0~+1768°C)	≥ 1M ohm
		Type B(320~+1820°C)	≥ 1M ohm

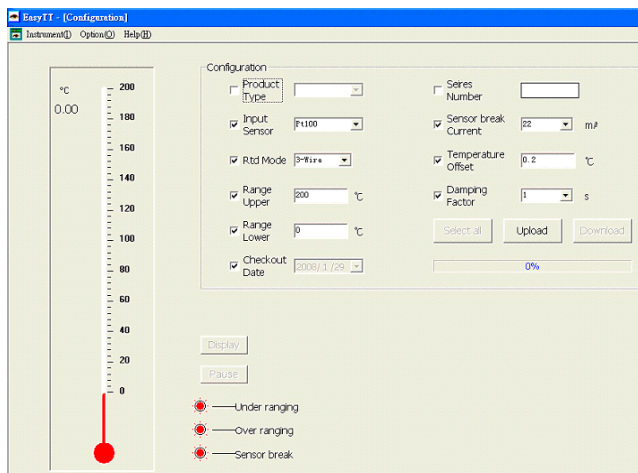
Analogue output

Power Type	Output Range	Accuracy	Load Resistance
Auxiliary Power	4 ~ 20mA	≤ ±0.2% of F.S.	≤ 550Ω;
Loop Power	4 ~ 20mA	≤ ±0.2% of F.S.	≤ (Vs-12) / 0.022 (ohm)

- Cold Junction:** -40~85°C, Error ≤ 1.0°C  
**Response time:** ≤ 100msec (10%~90% of FS)  
**Output ripple:** ≤ ±0.1% of F.S.  
**Sensor Break Protect:** Pull up to 22mA or Push down to 3.8mA programmable

Programming Software

We offer the programming software and programming cable(option). Please contact with our sales department if inquiry or download from our website.



**Environmental**

- Operating temp.:** -20~60 °C  
**Operating humidity:** 20~95% RH, Non-condensing  
**Temperature drift:** 0.1% F.S./10°C  
**Storage temperature:** -20~70 °C  
**Protection:** IP 42

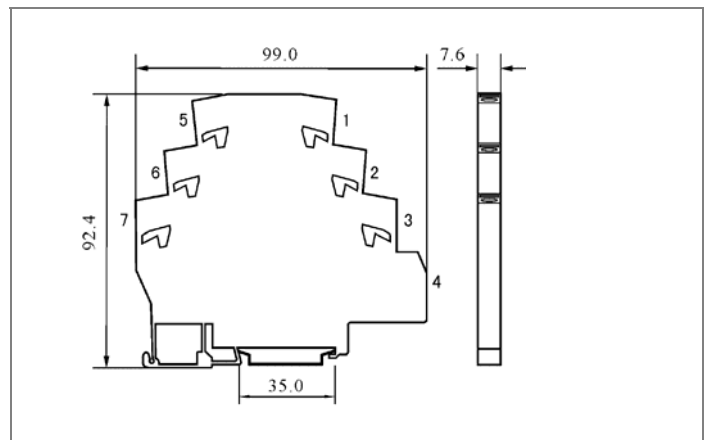
**Mechanical**

- Dimensions:** 7.6mm(W) x 99mm(H) x 92.4mm(D)  
**Housing:** Self-extinguishing, black ABS, UL94V0  
**Terminals:** Sprint terminal, up to 1.0 mm<sup>2</sup> wire  
**Mounting:** 35mm DIN rail (EN50022)

**Specification**

- EMC:** EN 61326-1  
**Electric Isolation:** Auxiliary Power type: AC 1.5KV for 1min; Between Power/Input/Output  
 Loop Power type: AC 1.5KV for 1min; Between Input / Output  
**Insulation resistance:** ≥ 100MΩ at 500Vdc

## DIMENSIONS



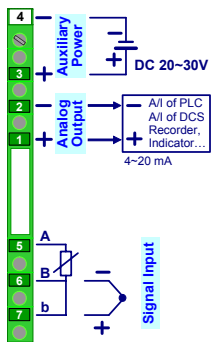
**Power**

- Power supply:** Auxiliary power: DC 20~30V  
 Loop power: DC 12~35V  
**Power consumption:** Auxiliary power type ≤ 60mA at 24V, 20mA

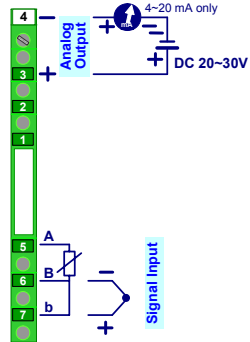
## ■ CONNECTION DIAGRAM

Please check the voltage & type of power supplied first, and then connect to the specified terminals. It is recommended that power supplied to the meter be protected by a fuse or circuit breaker.

### Auxiliary Powered type



### Loop Powered type



### Terminal and Wiring

