

MT-FF FREQUENCY DIVIDER

FEATURE

- 8 Outputs Range Programmable by dip switches
- Modular Design, Easy Maintain and Save Stock;
- Dual pulse output available
- CE Approved



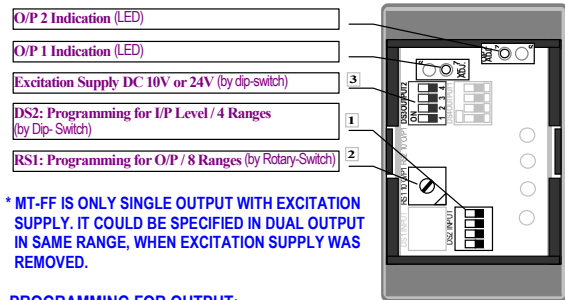
SPECIFICATION

Input Range	Input Impedance	Output Range	Output Mode
0 ~ 0.1 Hz	≥ 1M ohm	0 ~ Input / 1 Hz	Open collect: 30Vdc; 40mA
0 ~ 1 Hz	≥ 1M ohm	0 ~ Input / 2 Hz	
0 ~ 10 Hz	≥ 1M ohm	0 ~ Input / 4 Hz	0~50K Hz maximum; Pulse width: 50% duty cycle
0 ~ 20 Hz	≥ 1M ohm	0 ~ Input / 8 Hz	
0 ~ 50 Hz	≥ 1M ohm	0 ~ Input / 16 Hz	Voltage pulse: 5V, 12V, 24V; 10mA 0~50K Hz maximum; Pulse width: 50% duty cycle
0 ~ 100 Hz	≥ 1M ohm	0 ~ Input / 32 Hz	
0 ~ 200 Hz	≥ 1M ohm	0 ~ Input / 64 Hz	
0 ~ 500 Hz	≥ 1M ohm	0 ~ Input / 128 Hz	
0 ~ 1K Hz	≥ 1M ohm		Mech. Contact: 110Vac; 1A 0~130 pulse/minute maximum; On pulse width: 50% duty cycle
0 ~ 2K Hz	≥ 1M ohm		
0 ~ 5K Hz	≥ 1M ohm		
0 ~ 10K Hz	≥ 1M ohm		
0 ~ 20K Hz	≥ 1M ohm		

- Accuracy:** ±0.1% of F.S.
- Response time:** ≤250 msec. Plus one pulse cycle
- Input mode:** Voltage pulse, Open collector, Mechanical contact (30 Hz maximum)
- Pulse width:** 10 msec. minimum at < 20 Hz
Duty ratio 20 ~ 80% at > 20 Hz
- Input level:** 5Vp, 12Vp, 24Vp, 220Vac
selectable by dip- switch on top
- Excitation:** DC 10V/24V, 40mA; Changeable by dip
- Output mode:** Voltage pulse, Open collector, Mechanical contact (30 Hz maximum)
- Power Supply:** AC 115 or 230V ±10%, 50/60 Hz
Changeable by jumper inside
Option: DC 12V, 24V, 48V ±10%, (Isolated)
- Power consumption:** DC 5W, AC 6.5VA
- Option range:** Ultra-low frequency: 0 ~ 0.1 Hz
Ultra-high frequency: 0 ~ 50K/100K Hz
Available when excitation supply was removed
- Dual output:** Available when excitation supply was removed
- Operating temperature:** 0~60 °C
- Operating relative humidity:** 20~95 %RH
- Temperature coefficient:** ≤100 PPM/°C
- Storage temperature:** -10~70 °C
- Isolation:** Between Power / Input / Output1 / Output2
- Insulation resistance:** ≥100M ohm at 500Vdc
- Surge test:** 4 KV, 1.2 x 50 μs sec.
Common mode & differential mode

- Dielectric Strength:** AC 2.0 KV for 1 min
Between Power / Input / Output / Case
- Standard:** Comply with EN50081-1, EN50082-2
- Dimensions:** 50mm(W) x 87mm(H) x 123mm(D)-with socket
- Mounting:** Surface and DIN rail 35mm WIDE
- Weight:** 500g

ADJUSTMENT

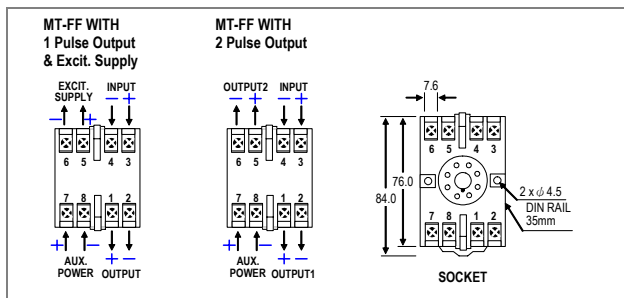


* MT-FF IS ONLY SINGLE OUTPUT WITH EXCITATION SUPPLY. IT COULD BE SPECIFIED IN DUAL OUTPUT IN SAME RANGE, WHEN EXCITATION SUPPLY WAS REMOVED.

PROGRAMMING FOR OUTPUT:

INPUT LEVEL	DS2 (1)	OUTPUT SIGNAL	OUTPUT RS1 (2)	EXCIT. SUPPLY	OUTPUT DS2 (3)
5 Vp		0 ~ Input / 1 Hz	0	10 V	
		0 ~ Input / 2 Hz	1		
12 Vp		0 ~ Input / 4 Hz	2	24 V	
		0 ~ Input / 8 Hz	3		
24 Vp		0 ~ Input / 16 Hz	4		
		0 ~ Input / 32 Hz	5		
		0 ~ Input / 64 Hz	6		
		0 ~ Input / 128 Hz	7		
220 Vac					

CONNECTION DIAGRAM & SOCKET



Remark: > When you select coding P for output range, please specify initial range.
> After change output range by rotary switches (R-S), re-calibration is to be requested.

ORDERING INFORMATION

